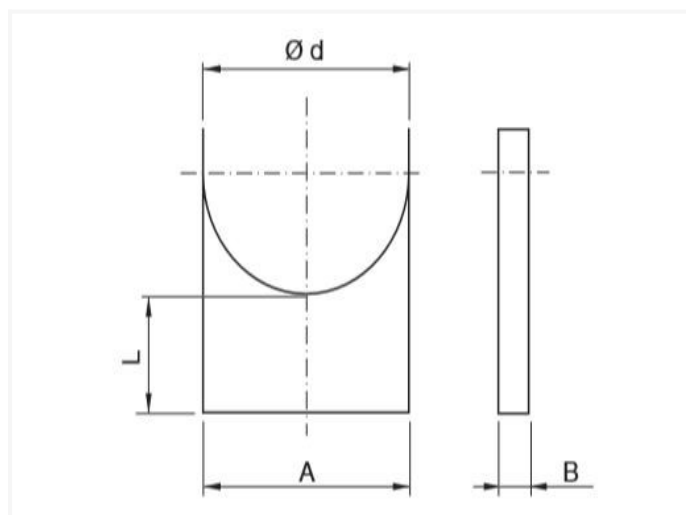


## MDR ~ Duct support



### Technical specifications

SIZE	A	B	L
80	83	30	75
100	103	30	75
125	128	30	75
160	163	30	75
200	203	30	75
250	253	30	75
315	318	30	75
400	403	30	75
500	503	30	75
630	633	30	75

MDR is used to fix ducts standing on joists

- with fixing holes in the base
- L dimension can vary:

- size 63-250: between 100 and 200mm
- size 315-630: between 100 and 250mm
- other height can be arranged by installing 2 duct supports with  $L=100$ , one inside the other. These can be locked with 2 self-tapping screws on each short side.