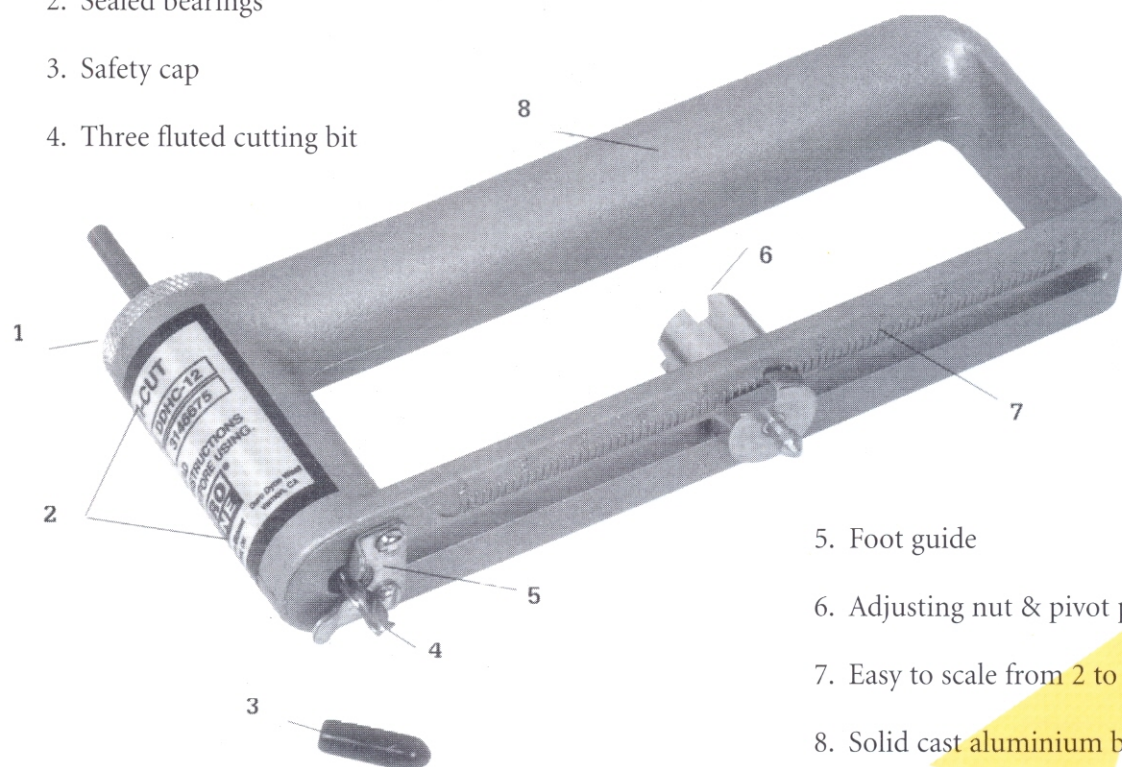


# MULTI-CUT HOLE CUTTER

## MODEL DDHC-12 - PARTS #818116

**CUTS PERFECT HOLES  
IN SECOND !**

1. Knurled head for easy removal
2. Sealed bearings
3. Safety cap
4. Three fluted cutting bit

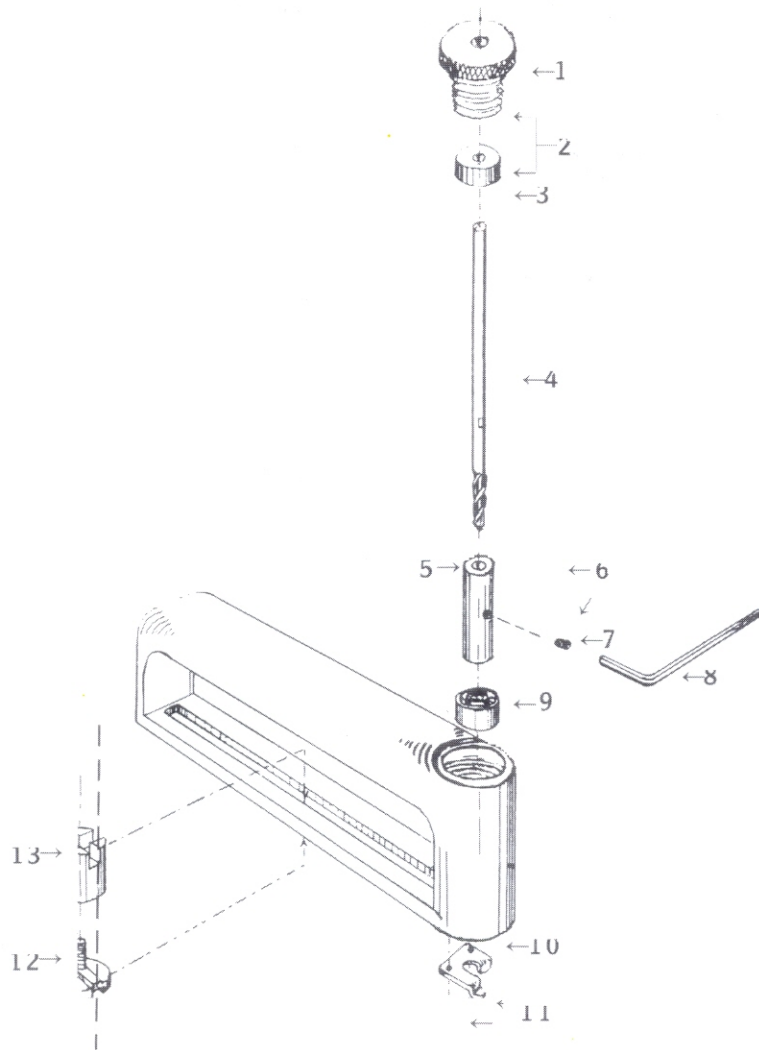


5. Foot guide
6. Adjusting nut & pivot pin
7. Easy to scale from 2 to 12 inches
8. Solid cast aluminium body

***This tool is a MUST !***

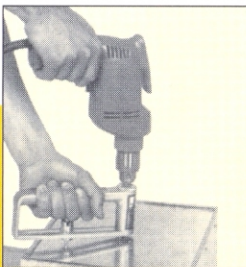
- ▶ Save time ! Especially when several same size holes are being cut.
- ▶ Cuts hole up to 12" in diameter !
- ▶ Will cut light gauge metal, aluminium, plastics, formica !
- ▶ Replaceable three fluted cutting bit !

HEATING  
COOLING  
ELECTRICAL  
PLUMBING  
CARPENTRY  
MANUFACTURING  
PLASTICS  
ENGINEERING  
HOBBYIST

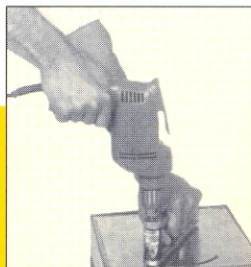


1. Cap, w/o Bearing
2. Cap, w/Bearing
3. Top Bearing
4. Standard bit for DDSM-12
5. Spacer, w/o Set Screw
7. Set Screw for Spacer
8. Allen Wrench
9. Bottom Bearing
10. Foot Guide
11. Screws for Foot Guide
12. Pivot Pin
13. Pivot Pin Nut

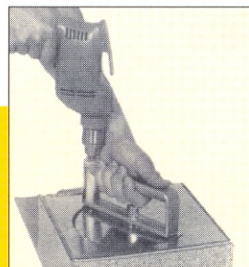
**ASSEMBLY** - Simply assemble the parts as shown on the parts list.



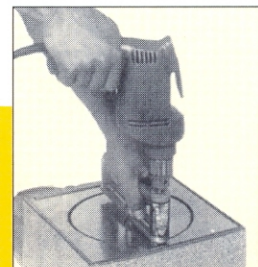
1. Set diameter required & drill center hole.



2. Insert pivot pin. Drill 2nd hole. Begin cutting clockwise.



3. At halfway mark, change position of hand.



4. Use foot guide to complete hole.

## Please note

Learning the tool back slightly will improve speed and ease of operation. Excessive pressure could cause bit damage. Only DURO DYNE cutting bits and replacement parts are recommended.